

IC-PCR1500 IC-R1500

Firmware update information

Thank you for using the Icom Download Service.

The IC-PCR1500/2500 Ver. 2.00 firmware is now ready to update for the previous Ver. 1.10 or older firmware for IC-PCR1500 and IC-R1500. (**NOTE:** If your IC-PCR1500/R1500 main unit firmware and control software version is 2.0 or later, this update is not necessary. See page 4 for version confirmation details.)

The following functions will be added and improved to your IC-PCR1500/R1500 when firmware updating is performed with the downloaded firmware.

For control software operation

- The IC-PCR1500 series control software is combined with IC-PCR2500 series software (New feature)
- Recording function— continuously records the receiving audio with a different file name when recording file capacity exceeds 2.0 GB. (New feature)
- Print preview function (New feature)
- Column width adjustment function for printing (New feature)
- Optimized USB audio output level and characteristics corresponding to AF volume control. (Improved)
- Accelerated file accessing/opening response for memory and multi-channel monitor file. (Improved)
- The date format of CSV file for band scope relates “Regional option” setting of the OS. (Improved)
- “AGC-F” indicator appearing and AGC button LED lighting condition has been changed. (Improved)
- Improvement for malfunction of memory channel file and multi-channel monitor file.

For remote controller operation

- Accelerated scan speed. (Improved)
- “Pop-up noise” is reduced during priority watch and WX alert. (Improved)
- Beep emission when cloning start, stop and error operation. (Improved)

IMPORTANT!: You undertake the updating of the firmware at your own risk and responsibility. Refer to the following steps for the correct procedures in updating the firmware.

■ Preparation

◇ Firmware and control software files

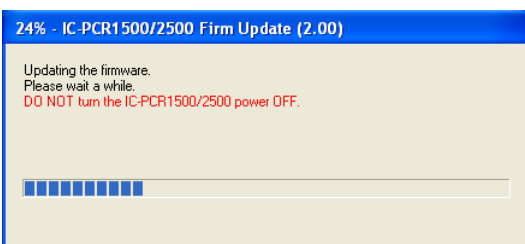
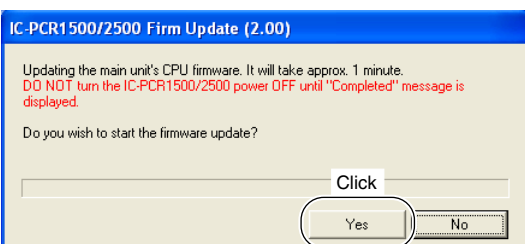
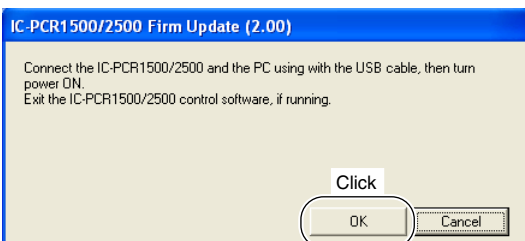
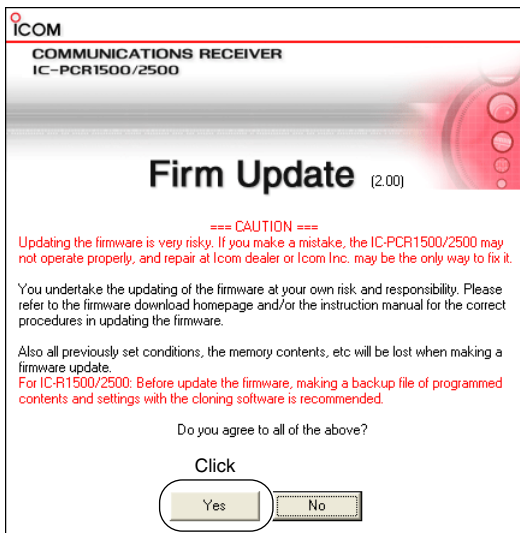
Before updating the firmware and control software, downloads and expands the following compressed files.

- Control software : CD-287901-006.zip
- Receiver’s main unit firmware : Pcr1500_2500_firmup_v200.zip

■ Updating

IMPORTANT!: You undertake the updating of the firmware at your own risk and responsibility. Refer to the following steps for the correct procedures in updating the firmware.

◇ Updating the main unit firmware



- ① Quit all applications when Windows is running.
- ② Double-click the “PCR1500_2500_fu200.exe” file, contained in “Pcr1500_2500_firmup_v200” folder, to start up the IC-PCR1500/2500 Firmware Update.
 - The window as at left below appears.

- ③ Read the caution in the window carefully.
- ④ Click [Yes] if you agree and continue the firmware updating.

- ⑤ Connect the main unit and the PC using the USB cable, and turning the main unit ON. After that, click [OK].

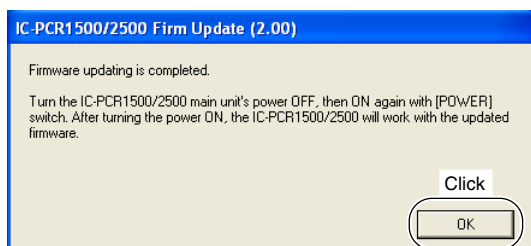
- ⑥ Click [Yes] to start the firmware update.

- ⑦ During updating, “Updating the firmware” window appears as at left.

⚠ WARNING!: NEVER turn the main unit power OFF at this stage. The IC-PCR1500/2500 firmware will be damaged. If the firmware file is damaged, the receiver unit can only be repaired at Icom service center or authorized technical dealer.

➡ Continue to the next page

◇ Updating the main unit firmware— continued



- ⑧ After the firmware updating, “Firmware updating is completed” window appears as at left. Click [OK].
 - When “Firmware updating failed” message appears, turn the main unit OFF, then ON again and retry the updating procedure from step ①.
- ⑨ Turn the main unit power OFF, then ON again.
 - The firmware updating is completed. The IC-PCR1500/2500 will work with the updated firmware.

◇ Updating the control software

- ① Move or make a backup of the preset file, “preset_e.mch*,” stored in the IC-PCR1500 folder into the desired location, such as “My Document.”
- ② Uninstall the current IC-PCR1500 program.
 - See the IC-PCR1500 instruction manual for uninstallation details. (Sec. 3; ■ Uninstallation)
- ③ Double click “Setup.exe” file in “Pcr1500_2500” folder.
 - “Pcr1500_2500” folder is contained in “CD-287901-006” folder.
- ④ Install the updated control software.
 - See the IC-PCR1500 instruction manual for installation details. (Sec. 3; ■ Installation)
- ⑤ Move or copy the preset file, “preset_e.mch*,” that is moved or backup in step ① into “IC-PCR1500_2500” folder.
- ⑥ Start up “IC-PCR1500_2500” program.
- ⑦ Open memory list screen.
- ⑧ Open the “preset_e.mch*” file from the file menu.

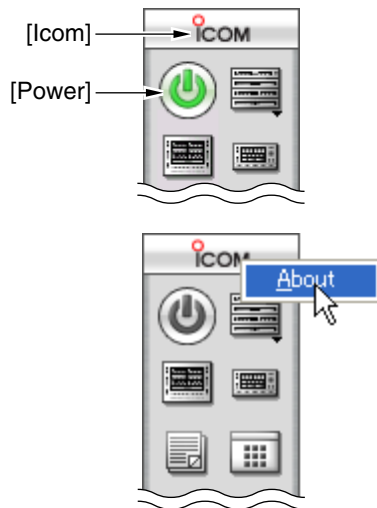
****Why the previous “preset_e.mch” file is needed?***

All previously set conditions, such as the memory contents, are stored into “preset_e.mch” file, if you have not save the set conditions with a different file name.

The “preset_e.mch” file (initializing file) will be deleted at the same time when the control software uninstallation is performed— all memory data is lost after the control software updating if the steps ① and/or ⑤ is/are skipped.

◇ Main unit firmware and control software version confirmation

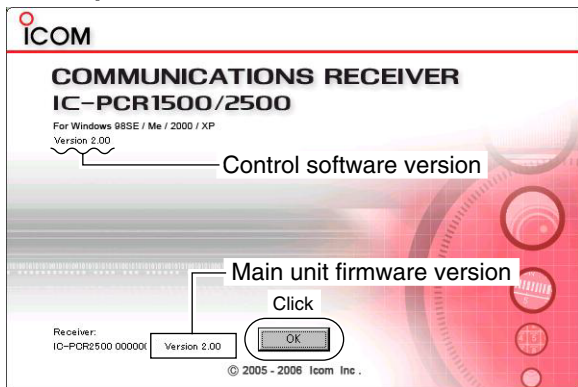
The firmware version of IC-PCR1500/R1500 main unit and control software can be confirmed with the following instructions.



- ① Before launching the program, make sure the main unit is powered ON.
 - The power indicator lights green.
- ② Launch the “IC-PCR1500_2500” program.
- ③ Click the [Power] icon on the tool bar to connect the control software and IC-PCR1500/R1500 main unit.

- ④ Right-click the [Icom], then click [About].

<Example>



- ⑤ Confirm the IC-PCR1500/R1500 main unit firmware and control software version with the displayed screen as at left.
 - “Version 2.00” is displayed for each indication if the updating is succeeded.

NOTE: When the IC-PCR1500/2500 control software version is 1.00 or 1.01, the version information is not displayed.

- ⑥ Click [OK].